

# ASP-04D-4S Cleartalk Daisy Chain

## Operating Manual

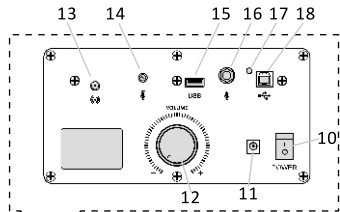


Please read this manual carefully before use

### Equipment Overview

The Angekis ASP-04D-4S equipment is based on the Internet computer equipment USB interface connection; the digital active loudspeaker plays the conference audio in real time and is equipped with a number of wireless pickup omnidirectional microphones with wider pickup coverage; at the same time, it is also equipped with local external microphone input interface so that the meeting layout is more simple, fast and efficient.

### Equipment Introduction



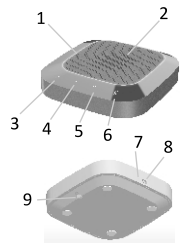
Panel Diagram in Back of Loudspeaker Master



Loudspeaker Master

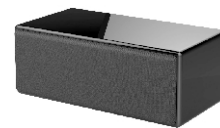
- 10. Power switch
- 11. DC power input port
- 12. Volume adjusting knob
- 13. External antenna interface
- 14. External microphone gain adjustment
- 15. USB 5V power output port
- 16. 6.5mm microphone input port
- 17. Master indicator
- 18. Master USB data interface
- 19. Master horn

- 1. Slave status ring light
- 2. Built-in microphone
- 3. Horn mute key
- 4. Volume - key
- 5. Volume + key
- 6. Microphone mute key
- 7. Charging indicator
- 8. USB charging interface
- 9. Slave on/off button

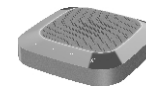


Wireless microphone slave

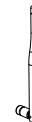
### Packing List



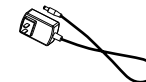
Loudspeaker master x 1



Wireless microphone slave ≤4 sets



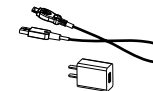
Master antenna x 1



Master power adapter x 1



Master USB cable\*1



Slave power adapters ≤4 sets

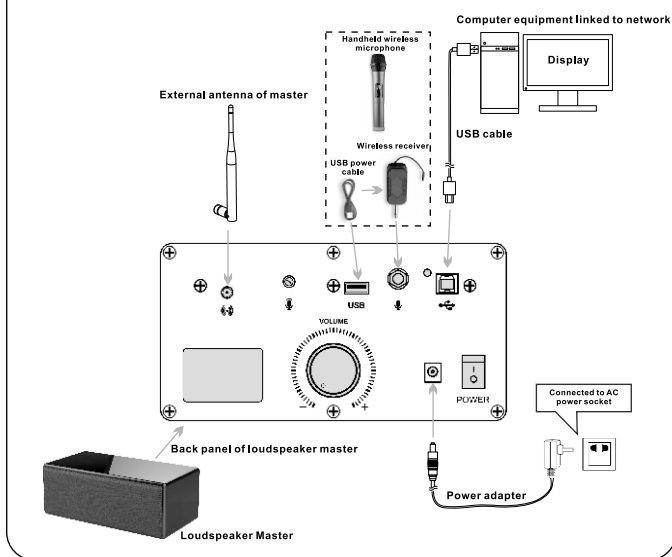


Operating Manual\*1

## Installation and Connection of Equipment

- As shown in the diagram of loudspeaker master, first install the external antenna, connect the computer equipment with USB cables, then connect the power input part of the loudspeaker master to the AC power socket with the master power adapter, turn on the power switch of the master; then the master indicator will be on in green.
- Before use, the wireless microphone slave should be connected with the USB power adapter to fully charge the built-in battery. The slave charging indicator will be on in orange when charging and will be off when the battery is fully charged. When the master is connected wirelessly, the slave ring light flashes in red, indicating low battery and that the battery needs to be charged in time.
- Wireless microphone slave, Press and hold the button for a moment until the ring green light is always on, indicating successful wireless connection with the master. If the green light flashes, indicating no wireless connection with the master.
- The installation distance between the loudspeaker master and all wireless microphone slaves shall be more than 2m, and the recommended installation distance between wireless microphone slaves shall be 1.5m.

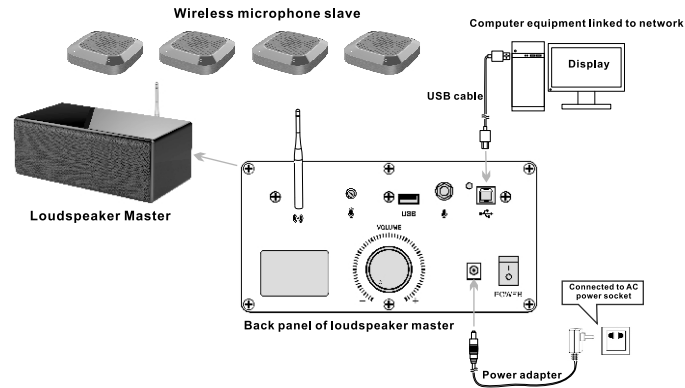
### Connection and Installation Diagram of Equipment



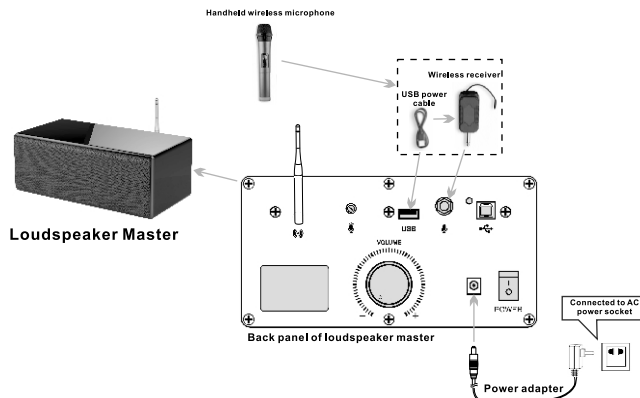
(3)

## Operation Instructions

### 1. Main Application Connection Diagram of Net Conference Telephone



### 2. Connection Diagram of Sound Application in Local Classroom and Meeting Room



(4)

## Operation Instructions

- According to meeting application scenario and requirements for equipment installation, determine the installation locations of the loudspeaker master and wireless microphone, install the antenna on the loudspeaker master, connect the loudspeaker to the computer the USB cable, turn the volume knob to the minimum position, insert the DC power adapter for power supply and turn on the power switch of the loudspeaker master; at the moment, the indicator will be on in green and the master is in standby state.
- Press and hold the on/off button of each wireless microphone slave in turn. When the green light is always on, it means that the slaves have been connected wirelessly to the master.
- The communication between the remote and local meeting places shall be established through the network instant messaging APP (such as: Zoom, Teams, etc.) of the computer; in the call process, it is necessary to moderately turn up the volume of the loudspeaker master and adjust the sensitivity of the computer microphone so that we can clearly hear the voice of the local and remote meeting places, and then you can proceed to interactions through network conference telephone.
- During the call, you can press the "Microphone Mute" button to mute the wireless microphone, at the moment, the ring red light will be always on; you can press the "Microphone Mute" button again to release the mute function and the ring red light will be off.
- During the call, you can press the "Loudspeaker Mute" button of the slave to mute the horn of the loudspeaker master, at the moment, the red indicator of the loudspeaker master will be always on; you can press the "Loudspeaker Mute" button again to release the mute function of the horn and the red indicator of the loudspeaker master will turn green.
- When the device is used for loudspeaker application in local classrooms and conference rooms, it can be connected with the external microphone with a 6.5mm plug. For example, handheld wireless microphone suite can be selected and installed according to the connection diagram for local sound amplification. The external microphone gain can be adjusted properly if necessary.

**Note:** This device is applicable for PC with Windows and other operating systems. USB interface adopts USB1.1, USB2.0 or above; USB cable is plug and play and does not need to install additional driver.

### Notes

- In addition to this device, network linked PC cannot be connected with other microphone and loudspeaker at the same time to avoid problems in use.
- Connect the USB cable of the loudspeaker master directly to the computer device. The use of the USB concentrator for connection will lead to problems in operation.
- After the device is successfully connected, the default device for playing (output) and recording (input) will display "Model of Local Device" in the sound and audio device properties of the control panel option of the computer device; otherwise, "Model of Local Device" needs to be selected again for confirmation.
- Keep the built-in battery of the equipment off high temperature and fire source to avoid explosion risk.
- Please do not try to repair the equipment, or else it may cause electric shock. If there is a problem and the equipment needs to be repaired, please contact your dealer.

(5)