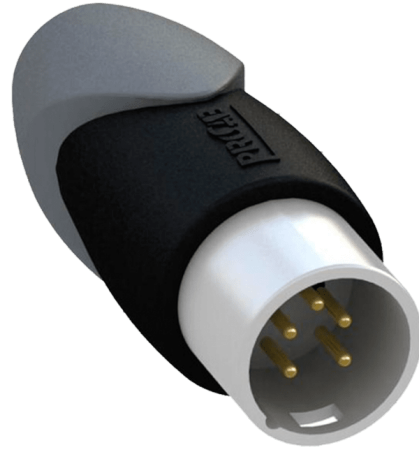


Product information:

The CLP158 is a 110 Ohm DMX terminator, featuring a 5-pin XLR connector. A DMX terminator should be plugged in into the last connected device in the DMX chain, preventing reflections causing data transmission errors on the DMX databus.



Properties:



Product Features:

Application	AV & IT
	Rental & MI
Series	Classic Series
	Bulk & Accessories