

New products 2022



Index

VIRO5	<i>Compact performance loudspeaker</i>	4
VEXO series	<i>High performance 2-way loudspeakers</i>	6
DWP105	<i>Universal network/PoE wall panel controller</i>	10
WP2xx series	<i>Universal wall panels</i>	12
TouchLink™	<i>Decentralize your audio solutions</i>	14
AUDAC Touch™ 2.7	<i>Amplify sound, simplify control</i>	16
SCP series	<i>Compact dual-channel power amplifiers</i>	18
CEP series	<i>Multi-channel 70/100V power-efficient amplifiers</i>	19
SMQ1250	<i>WaveDynamics™ quad-channel power amplifiers</i>	20
AMP22	<i>Mini stereo amplifier</i>	21
BMP42	<i>Bluetooth SourceCon™ module</i>	22
DMP42	<i>DAB/DAB+/FM tuner SourceCon™ module</i>	22

VIRO5

Compact performance loudspeaker



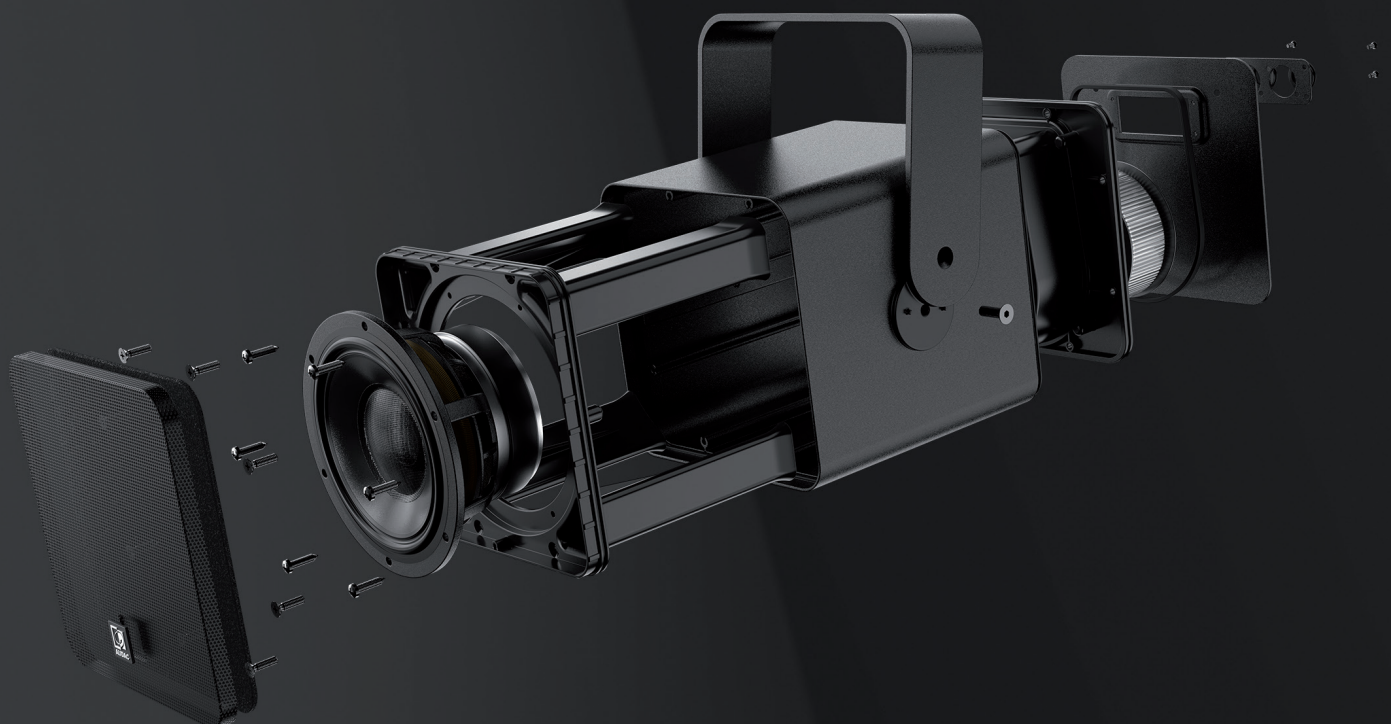
The VIRO5 is a 2-way coaxial loudspeaker that comes in both black & white that will blow you away with its powerful punch delivered in a compact package.

The VIRO5 incorporates a soft, silk-domed tweeter for smooth tonality and a 5" 2-way coaxial speaker driver to achieve an impressive coverage range and high excursion. This unique acoustical composition delivers an uncompromised clarity and surprisingly low frequency response.

Optional cover bag for 2 units: [CPVI205](#)

Ω 8 Ohm | Ω 16 Ohm | ⚡ 70-100 Volt* | 💧 IP55 | ☔ Weatherproof

*Optional transformer





A sound that lasts

VIRO5 incorporates a soft, silk-domed tweeter for smooth tonality and a 5" 2-way coaxial speaker driver to give the ideal size-to-sound ratio for a wide range of applications.

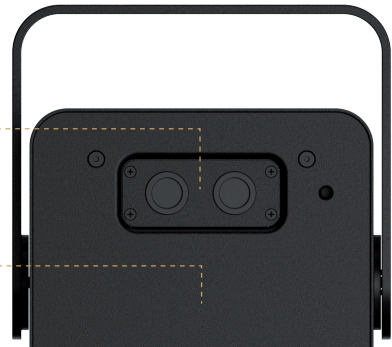
Always the right connection

Exchange your connections easily. From cable glands with rubber grommets to optional SpeakON connections (CVS102) and even an optional 70/100V transformer (TRV106).

CVS102



TRV106



MBK523/G

A galvanized ground pin that makes it possible to provide all kinds of gardens with the premium sound experience.

Also compatible with ALTiX series.



MBK530

This pole mount adapter allows the VIRO5 to be used in parking lots or mounted to light poles of up to 140mm diameter.

Also compatible with ALTiX series.



	Program power	RMS/AES power	Max SPL	Sensitivity 1W / 1m	Impedance / Transformer (Optionally 70-100V)	Freq response +- 3 dB	Freq range -10 dB	Dimensions (Excl. bracket)	Weight
VIRO5	120W	60W	110 dB	89 dB	8 Ω / Yes	100 Hz - 20 kHz	70 Hz - 20 kHz	180 x 180 x 191 mm	4.2 kg
VIRO5D	120W	60W	110 dB	89 dB	16 Ω / Yes	100 Hz - 20 kHz	70 Hz - 20 kHz	180 x 180 x 191 mm	4.2 kg

VEXO series

High performance 2-way loudspeakers

The VEXO series are compact high performance 2-way loudspeakers and come in 3 different (active or passive) models, each of them have a different size and performance to meet the requirements of every possible application.

The low-frequency transducer, which is made out of high-quality materials, is combined with a 1.7" voice coil compression driver, enabling high sound pressure levels and a tight driver response with a rotatable 90° x 70° coverage pattern for a wide range of applications.



VEXO110(A)

10" high performance 2-way (active) loudspeaker

Ω 8 Ohm | ⚡ 70-100 Volt



Optional cover bag: [CPVX110](#)



VEXO112(A)

12" high performance 2-way (active) loudspeaker

Ω 8 Ohm | ⚡ 70-100 Volt



VEXO115(A)

15" high performance 2-way (active) loudspeaker

Ω 8 Ohm | ⚡ 70-100 Volt



Mounting made easy

A possible inclination of -90° to +35° ensures optimal positioning of the speakers. It is even possible to mount the VEXO series to the ceiling which allows installing the loudspeaker cleanly in any environment. The cabinet is also fitted with a 35 mm pole adapter and ample rigging points.

*Optional MBK11xV
Clever U-bracket*





Empowering clarity

This aspiration has inspired us to design a high performance 2-way loudspeaker that provides exceptional accuracy and clarity coming from this refined enclosure.

Convenient connection

Two slanted XLR speaker connectors provide reliable connections with easy link-through to cabinets. Install your speaker cables at an angle to avoid any interruptions or unwanted disconnections.

Optional 100V transformer

By removing the backplate and replacing it with a 70/100V backplate on which the module is integrated, the high-performance loudspeaker is able to be implemented in 70/100V systems.

- TRM124 | 70/100V transformer module VEXO110 - 240 & 120W
- TRM224 | 70/100V transformer module VEXO112 & VEXO115 - 240 & 120W
- TRM248 | 70/100V transformer module VEXO112 & VEXO115 - 480 & 240W



	Peak power	Program power	RMS/AES power	Max SPL @16Ω	Sensitivity 1W/1m	Dispersion	Impedance / Transformer (Optionally 70-100V)	Freq response +-3 dB	Dimensions	Weight
VEXO110	1200W	600W	300W	121 dB	96 dB	90° x 70°	8 Ω / Yes	65 Hz - 20 kHz	329 x 540 x 345 mm	16.8 kg
VEXO110A	1200W	450W	300W	121 dB	96 dB	90° x 70°	8 Ω / No	65 Hz - 20 kHz	329 x 540 x 345 mm	18 kg
VEXO112	1600W	800W	400W	125 dB	99 dB	90° x 70°	8 Ω / Yes	58 Hz - 20 kHz	369 x 610 x 390 mm	22.4 kg
VEXO112A	1600W	600W	400W	125 dB	99 dB	90° x 70°	8 Ω / No	58 Hz - 20 kHz	369 x 610 x 390 mm	23.5 kg
VEXO115	2000W	1000W	500W	127 dB	100 dB	90° x 70°	8 Ω / Yes	50 Hz - 20 kHz	429 x 690 x 450 mm	28.1 kg
VEXO115A	2000W	750W	500W	127 dB	100 dB	90° x 70°	8 Ω / No	50 Hz - 20 kHz	429 x 690 x 450 mm	28.3 kg

VEXO active series

Discover what this solution can do for your installation



Optional ANI44XT

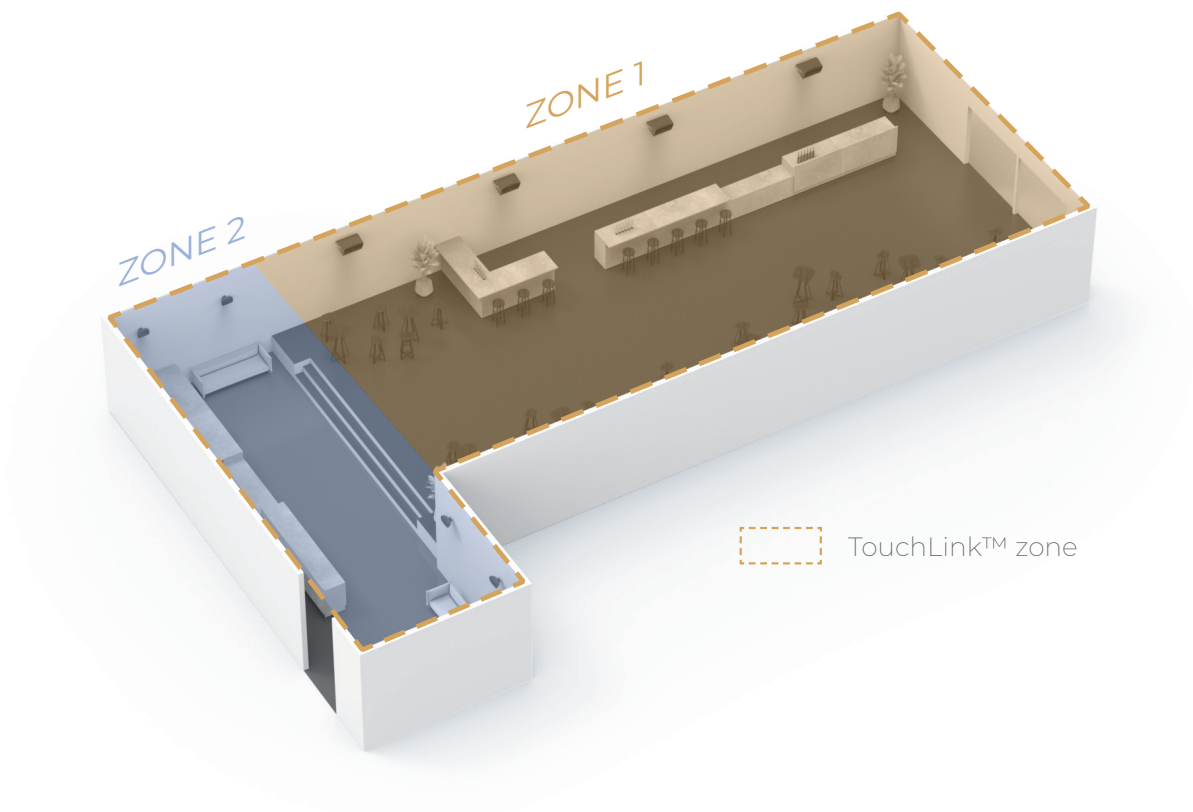


Unlock a world of possibilities

By installing the optional ANI44XT Dante™ audio network interface in the active version, you will be able to integrate the new VEXO series into any Dante™ enabled AV network and transfer digital audio with any compatible solution on the market. Like this the VEXO series will also become compatible with the DWPI05 Universal PoE wall panel. (see page 10).

TouchLink™ compatible

Used for creating virtual zones by linking multiple compatible devices with each other. In AUDAC Touch™ or directly on the device you can select multiple amplifier channels that should react to the user as one zone. By installing the ANI44XT the VEXO series will be compatible with AUDAC Touch™ and TouchLink™.

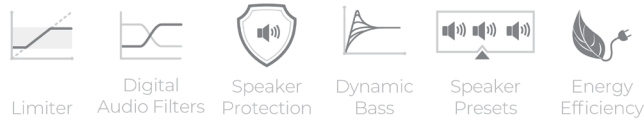


Controllability at your fingertips

A complete library of speaker presets is available for your projects, making it as easy as picking the right file, loading it & play! Besides the optimal acoustic configurations, this library also includes the loudspeaker performance parameters providing a bulletproof protection for your audio system.



AUDAC Touch™



WaveDynamics™ and integrated DSP processor

Thanks to its WaveDynamics™ compatibility and DSP processor, the audio control and processing technology enable any user to effortlessly control the most advanced acoustic configurations. The integrated DSP allows pre-sets for full-range, satellite and custom configurations and can be loaded via the USB slot on the back of the device. When not in use, the active versions of the VEXO series devices automatically go into an energy-saving standby mode.



Energy-saving standby mode

DWP105

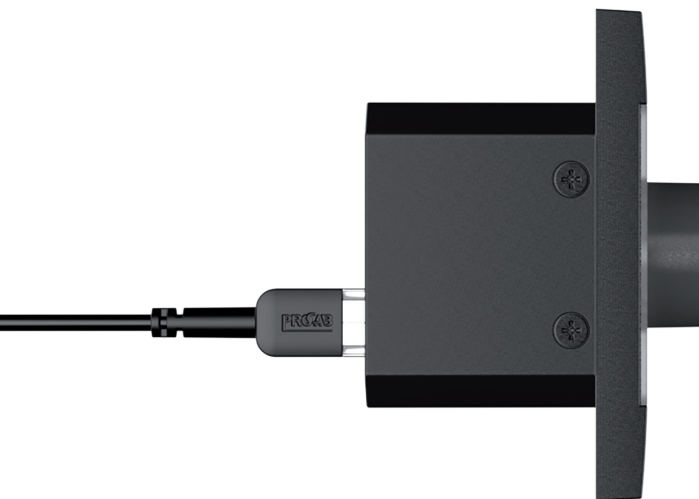
Universal network/PoE wall panel controller



- ✓ 360° LED light bar
- ✓ Transparent window for name tag (4x)
- ✓ 4 programmable touch buttons (with LED)
- ✓ Rotary encoder
- ✓ Compatible with most TCP-IP supported AV equipment

The DWP105 is an universal network wall panel controller, which is operated through 4 capacitive touch buttons and a rotary encoder dial. Each button is provided with an RGB indicator LED, while the RGB LED ring gives user feedback of the selected settings and audio VU information.

The front panel is finished with high grade materials such as the hardened glass make them blend into any environment. These wall panels are compatible with standard EU style in wall boxes, these wall panels are the ideal solution for solid and hollow walls.



Plug-and-play installation

The IP based communication makes it future proof while also being backward compatible with a lot of existing products, while the limited PoE power consumption makes it compatible with any PoE network based installation.

DWP105	Front finish	Rotary dial	Capacitive touch buttons	In/output	Dimensions (W x H)	Compatible installation boxes Solid wall - WB45S/FS Hollow wall - WB45S/FG Surface mount - WB200/Sx
	Glass + ABS	Yes	4 buttons	TCP-IP port	80 x 80 mm	

Adapt to your needs

Each button is provided with a transparent window which allows a custom name tag to be added behind the panel, offering a neat finishing while having a clear overview of the configured functions.



Flexible configuration

The configuration of the button functions and rotary dial is fully flexible, with full compatibility and support for a wide variety of devices. The simultaneous multi device support offers the largest flexibility for numerous specific applications.

☁ TCP-IP

Suitable with most TCP-IP devices

The DWPI05's design allows it to be used in many applications and with many different AUDAC or third-party AV equipment. From amplifiers to speakers, the choice is yours.

MFA series



AMP203



Compatible AUDAC devices

- ✓ M2
- ✓ ARU series
- ✓ VEXO series (with ANI44XT)
- ✓ AMP203 & AMP523
- ✓ MTX series
- ✓ MFA series
- ✓ SMQ series (with ANI44XT)
- ✓ More to come

WP2xx series

Universal wall panels



WP200
Remote volume controller
/B W



WP205
ARES5A wall panel
/B W



WP210
Universal wall panel
/B W



Bluetooth



Bluetooth

WP220
Universal wall panel
/B W

WP225
Universal wall panel
/B W

- ✓ Flexible sound input
- ✓ A complete range of wall panels
- ✓ High grade materials
- ✓ Available in black or white

- ✓ Compatible with standard EU in-wall boxes
- ✓ Various DIP switches for fixed installation
- ✓ Easily connect AUDAC digital solutions or any analog device (w/ 24 V power supply)

	Front finish	Mic Input	Line input	Bluetooth	Phantom power	Output level	Input connections	Dimensions (W x H)	Compatible installation boxes
WP200	Glass + ABS	n/a	n/a	n/a	No	Analogue DC voltage: 0 ~ V+	n/a	80 x 80 mm	
WP205	PMMA + ABS	Yes	Yes	n/a	Yes	+12 dBV	Front	80 x 80 mm	Solid wall - WB45S/FS
WP210	Glass + ABS	Yes (Neutrik)	Yes	n/a	Yes	+12 dBV & 0 dBV	Front & Rear	80 x 80 mm	Hollow wall - WB45S/FG
WP220	Glass + ABS	n/a	n/a	Yes (custom ID possible)	n/a	+12 dBV & 0 dBV	n/a	80 x 80 mm	Surface mount - WB200/Sx
WP225	Glass + ABS	Yes (Neutrik)	Yes	Yes (custom ID possible)	Yes	+12 dBV & 0 dBV	Front & Rear	80 x 80 mm	



Simplify and expand your system

The WP2xx series is a family of universal wall panels that not only expands the number of inputs for many devices, but also makes the operation of many AUDAC devices child's play. For even greater convenience, when fed by an external power supply these WP2xx series wall panels can also be connected to the line input on an amplifier or pre-amplifier.

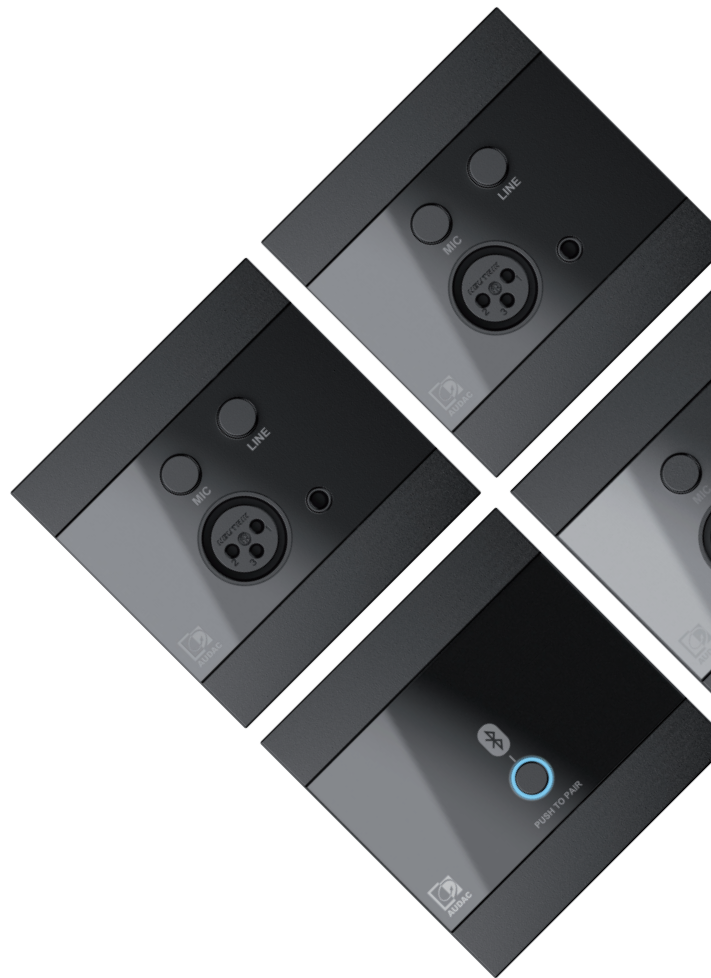
Compatible devices

- ✓ Analog AUDAC devices*
- ✓ AMP22 & AMP523
- ✓ ARES5A
- ✓ MTX series
- ✓ MFA series
- ✓ And more

*Compatible with all stereo balanced line level inputs, in case an external power supply is applied

Remarkable build quality

For the construction we have carefully selected high grade materials such as the hardened glass in black and white finish, these refined details will make them blend into any environment. All WP series wall panels are compatible with standard EU style in wall boxes, these wall panels are the ideal solution for solid and hollow walls.



Backside WP225



Clean fixed installation

The line input connections found on the front of the wall panels are also available on the back, allowing you to conceal fixed inputs easily. This can be very useful when a classroom has a fixed desktop computer and there is no need to change inputs.

TouchLink™

Decentralize your audio solutions

TouchLink™ is an ingenious system that can be used for creating virtual zones by linking multiple compatible devices with each other. In AUDAC Touch™ or directly on the device you can select multiple amplifier channels that should react to the user as one zone.

Main functionalities



Setting up (virtual) zones by grouping devices



Share input, volume & mute settings across these devices

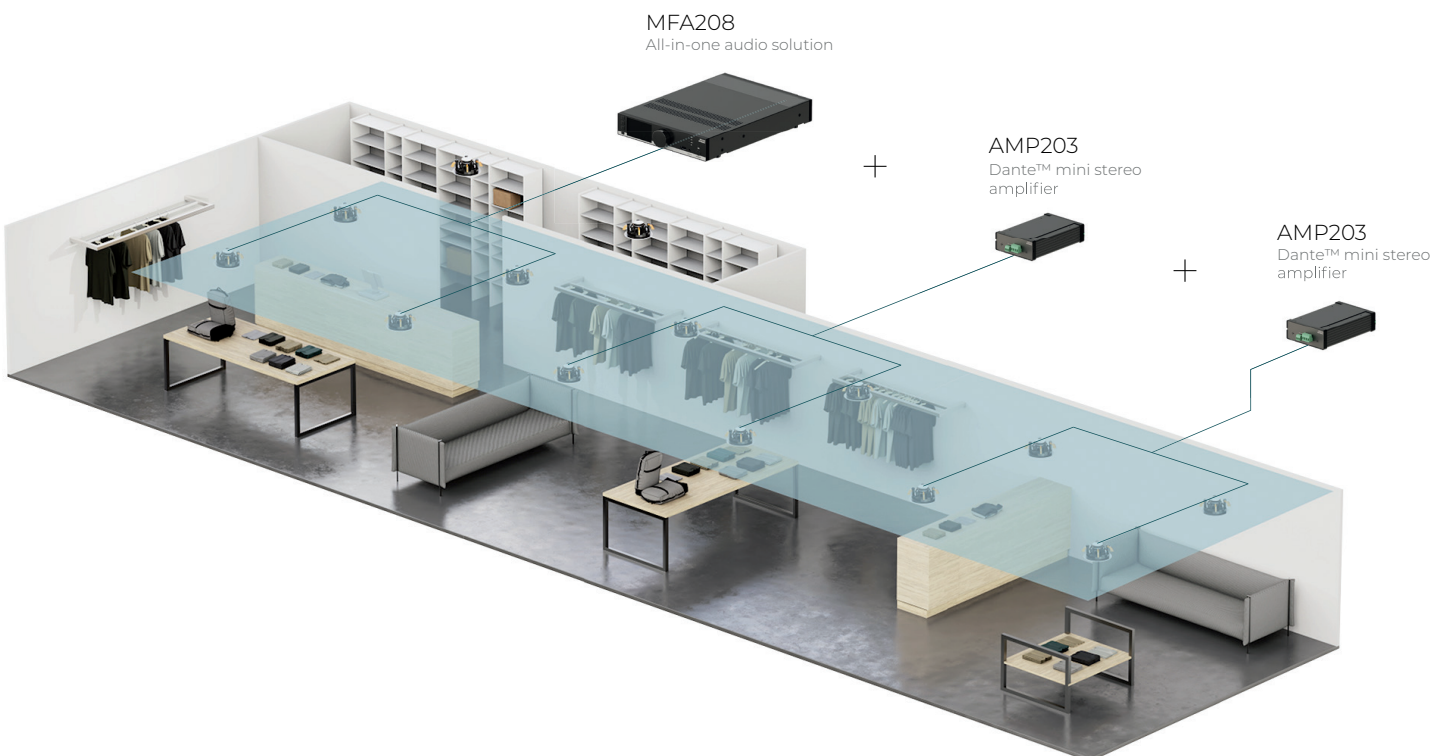


Priority settings

Setting up (virtual) zones

So how does it work? In AUDAC Touch™ or directly on the device you can select up multiple compatible devices or outputs that should react to the user as one zone by assigning it the same TouchLink™ zone ID (e.g. 1, 2, 3, ...). All devices with the identical TouchLink™ ID will virtually work as one zone. Compatible devices are the AMP203, which has network functionality built in by default but also the following devices when equipped with the ANI44XT Network interface:

- ✓ MFA series
- ✓ SMA series
- ✓ SMQ series
- ✓ PMQ series
- ✓ VEXO series
- ✓ More to come



Share input, volume & mute settings

In these virtual zones, you can share the inputs, volume & mute settings between the different devices so that they actually act as one (physical) zone. To counteract the possible differences in amplifier power, you can set volume offsets for each unit. This will set a constant difference in volume that will be maintained even if the overall volume of the zone is changed.

As mentioned, all inputs can be shared with the devices in the Touchlink™ zone. Keep in mind that it is important that the input lists are the same: On all the devices you will have to map the same inputs but of course it is possible that local input 1 on one device is the same as Dante™ 1 on another device. Additionally, a wall panel that is physically connected to one of the linked devices will automatically control all the linked devices.



Priority settings

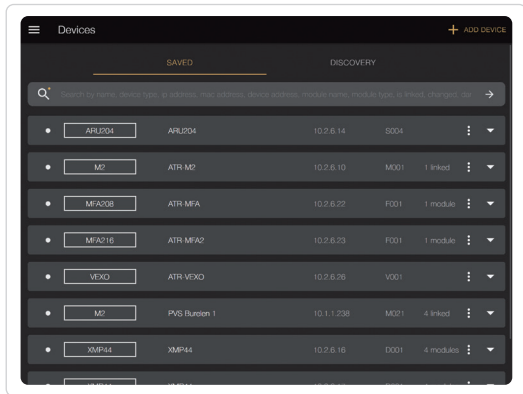
Last but not least, you can also send priority messages using the MFA to these Touchlink™ zones. Just set up the priority settings on the different devices within the zones after which they can be triggered by any input such as Dante™, SourceCon™ and more. When a priority is activated, the current input stops and the priority message starts playing on all the different devices. Additionally, you can set a different volume and/or offset of all the devices to ensure good intelligibility.



* Note that your national legislation may be different for your territory, check the website for more information.

AUDAC Touch™ 2.7

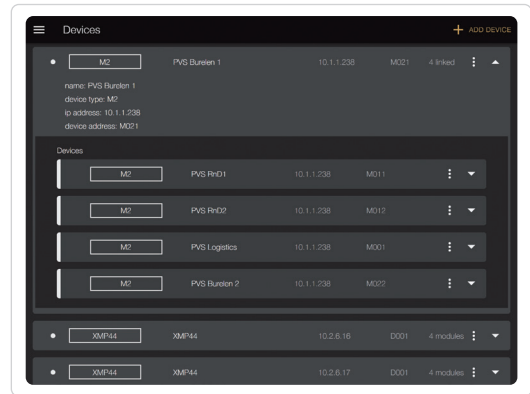
What is new with this update?



New device list & device discovery

The device list is an important page in AUDAC Touch that is used to show you all the devices that are located in your installation. However, we noticed that with more heavy users the device list could become long and obscure. The solution? We have split the device list into a device overview and a discovery page.

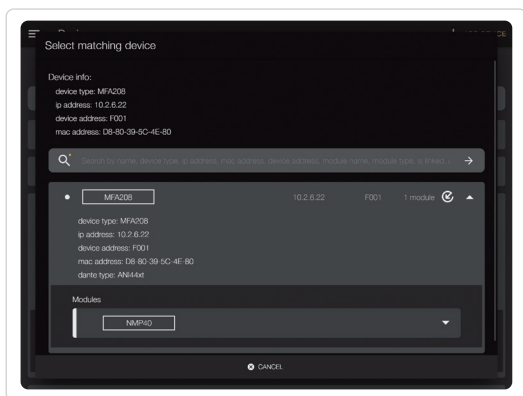
- ✓ Added discover page
- ✓ Added saved page
- ✓ Addition of a search bar



Linked devices

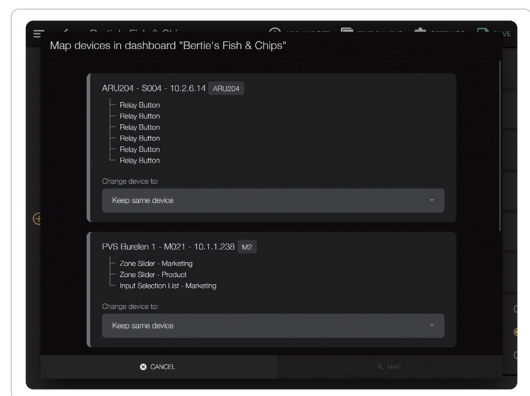
In this new update, you can now also manually set linked devices and direct devices. This way as a user you can manually change the setting so everything is correct in the database.

- ✓ A direct device is a device that you control using the device's own IP address
- ✓ A linked device is a device that you control using the IP of another device. For example an ARU that is connected to an M2



Probe devices

Another new handy feature is the device probe. Probing is used when we want to physically change a device for instance when you want to replace it with a new one. Probe will search for all devices with the same device type so you can update your AUDAC Touch database without having to manually change everything.



Mapping feature

This new feature is something we added to avoid lots of work when for example you accidentally remove a device from the app causing the widgets in your dashboard related to that device to stop working. We made it possible map your desired device again in the settings of your dashboard.

100% customizable

Select your widgets

Output widget

Input selection and output volume adjustment is made possible through graphical slide faders combined with drop down menus.

Licensed streaming*

The NMP40, a professional audio streaming SourceCon™ module for Spotify™ and Soundtrack Your Brand© is now supported, allowing you to easily integrate and control both streaming services from within the application.

Control each zone

Control audio players and other serial communication supporting devices, such as WaveDynamics™ amplifiers.

Adaptive dashboard

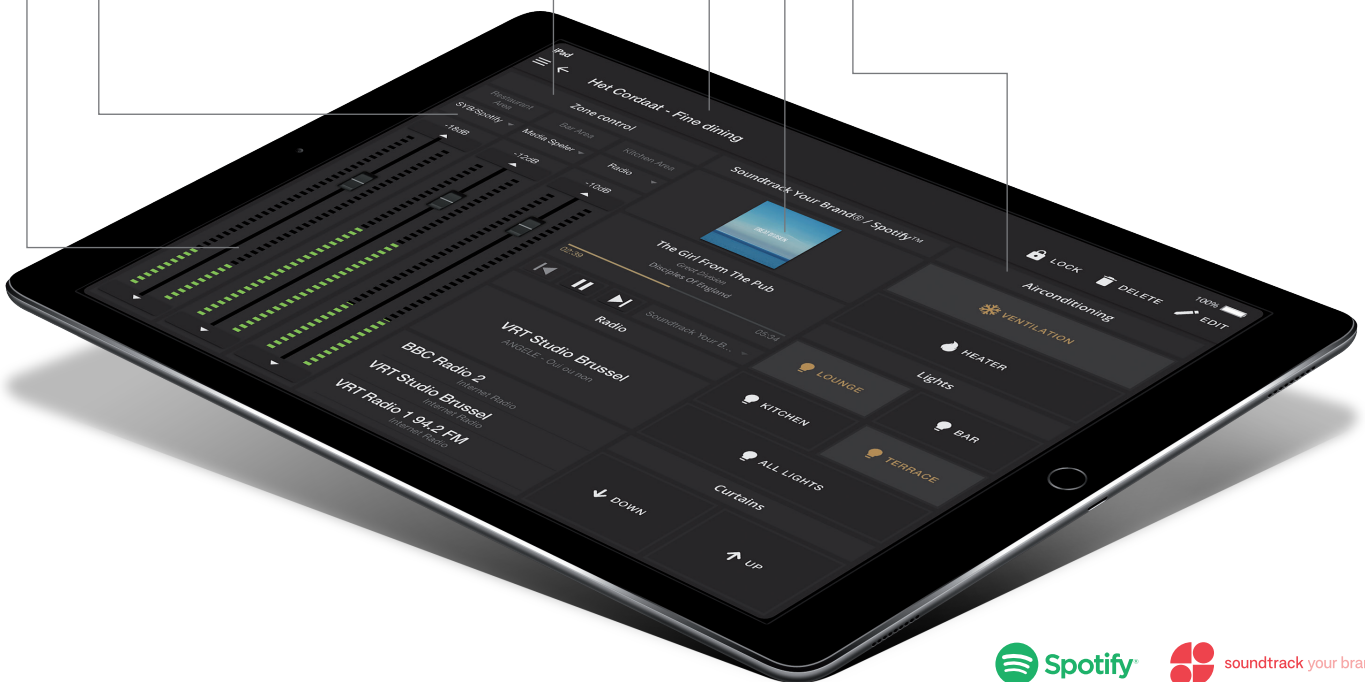
Fully flexible positioning and scaling allows you to design and group your dashboard according to your own preferences. Custom naming offers an intuitive and user friendly interface according to project specific requirements.

Now playing

Currently playing media player information including album covers and additional carried information can be displayed on the main dashboard. Additional widgets for control can be separately selected.

Commander function

Relay unit controls can get implemented, offering countless possibilities for expansion of your AV system to become a total system control platform.



* Note that your national legislation may be different for your territory, check the website for more information.

SCP series

Compact dual-channel power amplifiers



The SCP series are a range of extremely powerful compact dual-channel power amplifiers for commercial use. These half 19" devices can be used in stereo low impedance or 70/100V bridge mode. There are 3 different models to serve a wide range of applications with power ratings that vary between 240W up to 600W in a half 19" rack space housing.

The compact and elegant design of the half 19" rack space enclosure allows for single installation in a 10.5" equipment rack, or side-by-side (two devices) in a 19" equipment rack. Of course, desktop installation or mounting in an equipment rack using the MBS310 series mounting adapters is possible.

You may wonder if so much power in such a small enclosure could cause some heating issues? Not at all, the SCP series are designed in a unique way so that optimal cooling is established, this by passive cooling on the SCP212 and active cooling

on the SCP224 and SCP230 in order to improve thermal comfort without the need for additional actions.

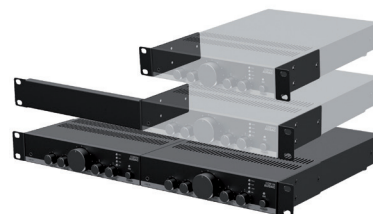
A connection to the WP2xx series input wall panels (see page 12) or volume controllers can be made via the RJ45 connector on the back of the SCP. This allows for a cost-effective plug & play solution to extend or introduce brand new input possibilities and control options.

Equipped with a standby mode switch, the SCP series will enter an energy-saving standby mode after a period of inactivity making him unique in the market. This feature together with the overall energy efficient design makes the SCP meet the high standards of the Energy star certification.

When you combine the SCP series with a suitable pre-amplifier or wall-mounted input panel you create a relatively powerful and complete solution for background music installations.

- ① Priority mute contact input
- ② Connection socket for external volume controller & remote input module
- ③ 70/100V, standby mode & stereo- BTL/HPF mode configuration

- ✓ Up to 600W of power in a compact casing
- ✓ Plug-and-play compatible with WP2xx series
- ✓ Energy efficient standby mode



MBS310
Optional mounting bracket

	Stereo @ 4 Ω	Bridge @ 70/100V	THD+N	Signal / Noise	Output voltage / Impedance	Dimensions	Weight
SCP212	2 x 120W	240W	< 0.5%	> 90 dB	100V / 70V / 4 Ω	217.5 x 44 x 300 mm	2.70 kg
SCP224	2 x 240W	480W	< 0.5%	> 90 dB	100V / 70V / 4 Ω	217.5 x 44 x 300 mm	2.75 kg
SCP230	2 x 300W	600W	< 0.5%	> 90 dB	100V / 70V / 4 Ω	217.5 x 44 x 300 mm	2.80 kg

CEP series

Multi-channel 70/100V power-efficient amplifiers



The CEP series are professional 70/100V multi-channel power-efficient amplifiers. The one unit height device comes into two models. The CEP408 offers four channels and has an output power of 80 Watt. Both low impedance as 70/100V, deliver high-quality amplification distributed over multiple zones in various applications.

With its compact and lightweight design, the CEP series is designed with high efficiency and reliability by providing input linking through miniature switches at the back of the device in combination with Class-D amplifier technology. These switches allow daisy linking inputs from one channel to another by simply pressing the switch.

The highly efficient Class-D amplifier technology delivers an uncompromised sound experience in the most effective way. The input connections are performed with 3-Pin Terminal block connectors while the output connections are performed with a 4-pin Terminal block connector.

The multi-channel amplifier is Energy Star compliant yet can be enabled or disabled with a standby switch on the back of the device. This all is housed in a HE 19" Rack space housing. In order to reach maximum installer/maintenance convenience, the CEP is passively cooled ensuring a silent operation.

① 4-Pin terminal block output connections

② 3-Pin terminal block input connection

- ✓ Energy-star certified
- ✓ Silent passive cooling
- ✓ Terminal block input connections
- ✓ Terminal block output connections
- ✓ Input linking through miniature switches
- ✓ Compact and lightweight design
- ✓ Class-D amplifier technology

	RMS Power	THD+N	Signal / Noise	Freq Response	Output voltage / Impedance	Dimensions	Weight
CEP408	4 x 80 W	< 0.1%	> 100 dB	20 Hz – 20 kHz	70V / 100V / 4Ω	482 x 44 x 330 mm	6.3 Kg
CEP803	8 x 30W	< 0.1%	> 100 dB	20 Hz – 20 kHz	70V / 100V / 4Ω	482 x 44 x 330 mm	6 Kg

SMQ1250

WaveDynamics™ quad-channel power amplifiers



The features and availability in different output powers make this Class-D quad-channel power amplifier series ideal for both fixed and mobile applications. Whether accessing it on an administrator or a user level, configuration is made easy using a WaveDynamics™ DSP processor in combination with a front facing 2.5" LCD display and control buttons. Acoustic optimization can be achieved using available Butterworth, Bessel and Linkwitz-Riley filters with selectable roll-off which can be configured as Low / High & Band Pass, adjustable 7-Band equalization and Q-factor.

Other provided functions include delay, dynamic bass boost, output power limiting while the input selection matrix allows for great flexibility. For complete system integration, it has an RS232 control port. AUDAC provides a complete library of presets for its speakers ensuring the best acoustical performance with a bullet-proof speaker protection. These can be uploaded using the USB input that can also be used for making a backup of your work.

- ① Speakon compatible & terminal block output connections
- ② RS232 control and Dante™ expansion port
- ③ XLR & terminal block input & linkthrough connections
- ⓘ Also available in 70-100V: see PMQ series
- ✓ TouchLink™ compatible
- ✓ Lightweight class-D amplifier
- ✓ Advanced DSP and speaker management
- ✓ 2.5" LCD display with intuitive user interface
- ✓ WaveDynamics™ speaker & set configurations
- ✓ RS232 control and Dante™ compatibility (optional)
- ✓ DWPT05 compatible (see page 10)

	Stereo @ 4 Ω	Stereo @ 8 Ω	Bridge @ 8 Ω	THD+N	Signal/Noise	Freq Response	Dimensions	Weight
SMQ350	4 x 350W	4 x 220W	2 x 700W	< 0.05 %	> 95 dB	20 Hz - 20 kHz	482 x 88 x 420 mm	8.15 kg
SMQ500	4 x 500W	4 x 300W	2 x 1000W	< 0.05 %	> 95 dB	20 Hz - 20 kHz	482 x 88 x 420 mm	8.35 kg
SMQ750	4 x 750W	4 x 380W	2 x 1500W	< 0.05 %	> 95 dB	20 Hz - 20 kHz	482 x 88 x 420 mm	8.55 kg
SMQ1250	4 x 1250 W	4 x 630W	2 x 2500W	< 0.05 %	> 95 dB	20 Hz - 20 kHz	482 x 88 x 420 mm	9.76 kg

AMP22

Mini stereo amplifier

Perfect for small installations where relatively low power is required, these compact sized power amplifiers offer multiple control and source connectivity possibilities.

Being extremely energy efficient thanks to the Class-D, standby mode and included switching power supply they use make them compliant with the highest energy efficiency and environmental requirements.



TCP-IP



Ideal for applications requiring compact and economical audio solutions such as class rooms, offices and meeting rooms, ... The compact size and very high efficiency allows it to be hidden in a closet, on a false ceiling or mounted under a desk or table.

The combination of a stereo balanced line and microphone input makes it perfectly suited for applications where used in combination with projection screens and video sources while a microphone for presentations is connected.

A remote wall mixer (e.g. WP2xx series) can be connected for applications where local mixing for the inputs is desirable, while large distances can be covered between the source and amplifier using simple

CAT5E or higher twisted pair cabling. The volume controller input allows the connection of an additional wall controller for overall volume control.

- ✓ Low noise & distortion audio amplification
- ✓ High energy efficiency
- ✓ Remote audio & volume control input
- ✓ Silent passive cooling
- ✓ Compatible with WP2xx series

Optional mounting bracket



Compatible with a variation of MBS1xx series installation accessories.

AMP22	Stereo @ 4 Ω 2 x 15W	Stereo @ 8 Ω 2 x 7.5W	Bridge @ 8 Ω 1 x 30W	Efficiency 87% @ Max	Freq Response 20 Hz - 20 kHz	Dimensions 108 x 44 x 165 mm	Weight 0.80 kg
-------	-------------------------	--------------------------	-------------------------	-------------------------	---------------------------------	---------------------------------	-------------------

SourceCon™ modules

SourceCon™ technology guarantees true plug-and-play implementation to any compatible device, allowing your media player to be tailored to fit any specific application. The wide variation of compatible modules and extensive configuration possibilities allows flexible combinations for any application.

Installation is done by sliding the modules into guide rails, while connections are made using board-edge connections. This allows simple and fast installation without requiring additional internal wiring or complex configuration. When inserted to a supporting slot, the module is instantly installed, discovered and ready for operation.



BMP42 Bluetooth module

- ✓ Long distance Bluetooth transmission
- ✓ Pairing protection
- ✓ External & removable antenna
- ✓ Bluetooth version 4.2
- ✓ Custom device ID naming
- ✓ Extension antenna available

DMP42 DAB/DAB+/FM tuner module

- ✓ DAB/DAB+/FM support
- ✓ RDS / Radiotext station information
- ✓ Preferential station storage (10 entries)
- ✓ Signal strength indication
- ✓ Splitter ASK40S available





Matrix Systems

With innovation at the base of AUDAC's development, the brand offers comprehensive, expandable and powerful solutions for almost every situation.



Amplifiers

AUDAC offers a wide range of digital multi-channel amplifiers for single and multi-zone systems.



Modular audio system

AUDAC pays great attention to its multimedia sources. The development of cutting edge digital audio technology has led to a complete range of sources that will inspire you!



Microphones

From the most robust hand-held or headset microphones to advanced paging systems, AUDAC provides you with the right extension for your voice.



Surface mount loudspeakers

The perfect match for fixed audio installations in modern environments, AUDAC offers different sizes of elegantly designed loudspeaker solutions.



Flush mount loudspeakers

Exceptional sound quality and value for a wide variation of applications. The extensive range of flush mount loudspeakers exists out of 5 different series that are complementary to one another.



Complete audio solutions

AUDAC offers a wide range of custom audio solutions. Pre-assembled loudspeakers packages specially and acoustically designed for each project.

Looking for advice or a custom solution?



 info@audac.eu

 facebook.com/audacaudio

 twitter.com/audacaudio

 youtube.com/user/audacaudio